



## MIX IT UP! FOR A CUSTOM CUP

Our cups have interchangeable tops and bottoms so you can always put together the perfect cup



### CHOOSE THE PERFECT LID FOR YOUR BABY'S STAGE CUPS

- Transition Cup | 4m+**  
Easy transition from bottle to cup with a soft silicone spout
- Semi-Soft Spout | 6m+**  
Built tough but gentle for sensitive gums

- Straw Trainer | 9m+**  
Easy-sip straw helps develop oral motor skills

- 360° Rim Trainer | 9m+**  
Sip anywhere on the rim for open cup training

- Rim Spout Trainer | 12m+**  
Ergo-shaped! Perfect for little noses, lips & mouths

- Flip-Top Straw | 12m+**  
Playground-ready cup with easy slide straw

- Soft Spout Tumbler | 18m+**  
Soft silicone spout with protective flip-lid, ideal for outdoor adventures

- My Tumbler | 2y+**  
This waterbottle sports a free-flow, open rim spout & spill-proof lid - ideal for advanced drinkers

### Save These Instructions

If you have any questions or comments about this product, or are missing any of the parts, please contact us in one of the following ways:

- (877)-424-4226
- info@chiccousa.com
- www.chiccousa.com
- 1826 William Penn Way  
Lancaster, PA 17601

ISO188E\_03 ©2023  
Artsana USA, INC. 9/23

### Helpful Tips

- Silicone has a tendency to self-heal. Locate the vent valve and push on the vent with your finger to make sure it opens freely.
- For safety and hygiene we recommend replacing silicone valves/straws every three months. Replacement parts are available at www.chiccousa.com.
- When assembling the Flip-Top Straw Lid to cup we recommend having the slider closed to prevent liquid backup in the straw.

### Before Use

- BEFORE FIRST USE:** Non-insulated cups can be sterilized using steam sterilization. Non-insulated cups can also be sterilized in boiling water for 5 minutes, before first use. Allow to cool completely and dry thoroughly. Do NOT boil or sterilize the insulated cups. All parts are dishwasher safe - top rack ONLY. Use of a dishwasher may accelerate wear.
- Always make sure the lid is screwed on the cup tightly to avoid leaking.

### WARNING

#### For Your Child's Safety - Read All Instructions

- Adult supervision required.
- Keep unassembled parts out of child's reach.
- Do NOT allow child to run or play while holding the cup.
- Microwave heating of cup contents can cause uneven heating and is not recommended.
- Do NOT fill the cup with hot liquids as it may cause scalding.
- Continuous and prolonged sucking of milk, formula, and other fluids can cause tooth decay.
- NEVER use spout or straw as teether or soother.
- Do NOT use with carbonated drinks, juices with pulp and hot drinks.
- Do NOT leave cups in direct sunlight.

### WARNING

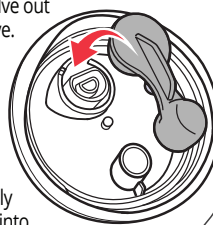
#### For Your Child's Safety - Read All Instructions

- The Flip-Top Straw Cup is for use with cold milk and water. It is not for use with formula.
- Straws are not suitable for children under 6 months of age.
- Inspect carefully before each use. Make sure there are no broken parts or sharp edges. Discard cup at first sign of damage.
- Chicco cups are interchangeable. Do NOT use cup parts or components not included in the Chicco cup range.
- The cups are not intended to store liquid for extended periods of time.
- ALWAYS remove the silicone components and clean where they are attached when washing the cups.

### Using the Silicone Cup Valve

#### Using the Silicone Valve:

- Pull the Silicone Valve out of the cup lid to remove.
- When re-attaching the valve, always line up the larger ring with the largest part on the valve.
- Make sure the valve is completely pushed down into the rings on the cup lid.



### Using the Transition Cup

#### Attaching the Silicone Spout:

- Pull the Silicone Spout up through the cup ring.
- Make sure the air vents on the cup ring are centered in the cutouts on the Silicone Spout, as shown.



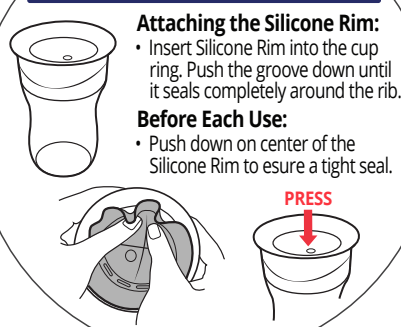
### Using the 360° Rim Trainer

#### Attaching the Silicone Rim:

- Insert Silicone Rim into the cup ring. Push the groove down until it seals completely around the rib.

#### Before Each Use:

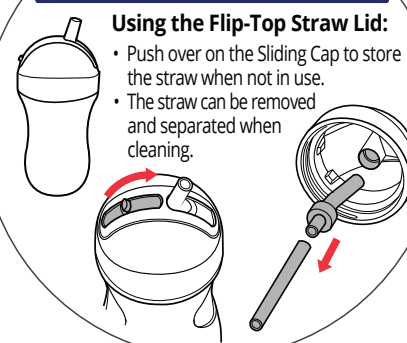
- Push down on center of the Silicone Rim to ensure a tight seal.



### Using the Flip-Top Straw Cup

#### Using the Flip-Top Straw Lid:

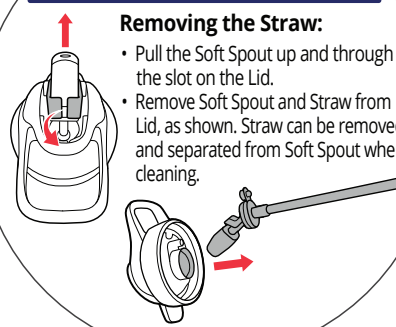
- Push over on the Sliding Cap to store the straw when not in use.
- The straw can be removed and separated when cleaning.



### Using the Soft Spout Tumbler

#### Removing the Straw:

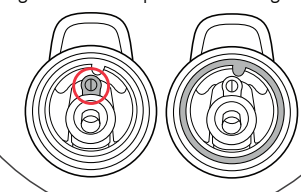
- Pull the Soft Spout up and through the slot on the Lid.
- Remove Soft Spout and Straw from Lid, as shown. Straw can be removed and separated from Soft Spout when cleaning.



### Using the Soft Spout Tumbler

#### Using the Soft Spout Tumbler Lid:

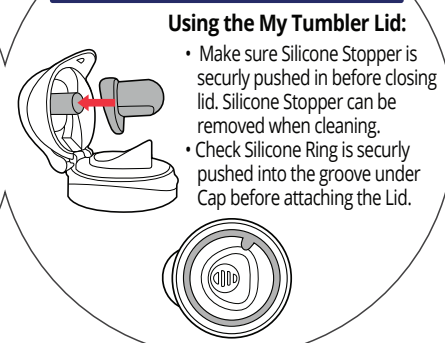
- When attaching the Soft Spout and Straw make sure the air valve is correctly attached.
- Make sure the Silicone Ring is securely pushed into the groove under Cap before attaching the Lid.



### Using the My Tumbler

#### Using the My Tumbler Lid:

- Make sure Silicone Stopper is securely pushed in before closing lid. Silicone Stopper can be removed when cleaning.
- Check Silicone Ring is securely pushed into the groove under Cap before attaching the Lid.



### Cleaning

To ensure optimal hygiene, always wash and rinse thoroughly before and after each use using mild soap and warm water. Do NOT use bleach or any other harsh chemicals. Disassemble all parts completely before cleaning. ALWAYS remove the silicone components and clean where they are attached when washing the cups. All cups and parts are dishwasher safe on delicate cycle - top rack ONLY. Use of a dishwasher may accelerate wear. Dry thoroughly before storing in a dry place.

Do NOT boil or sterilize the insulated cups - all other cups can be sterilized. Allow to cool completely and dry thoroughly.